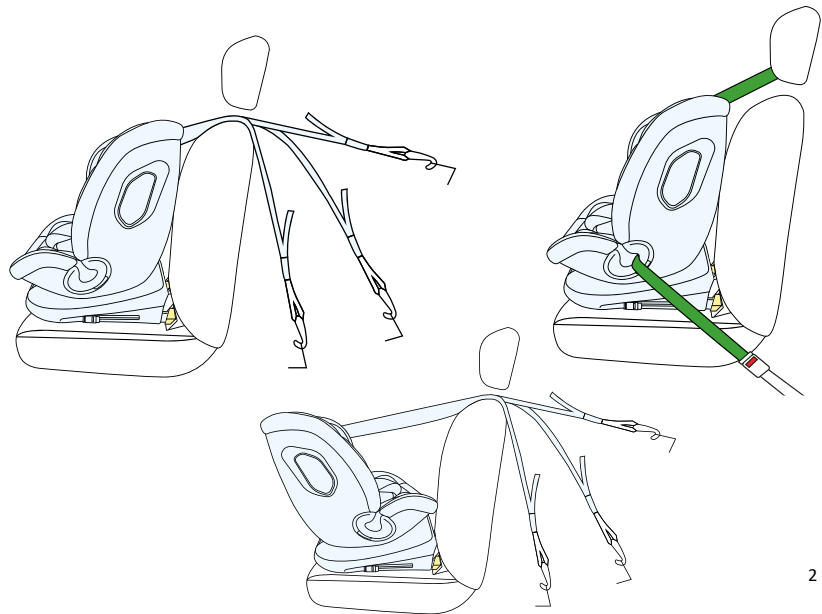


XPEDITION 3 i-Size

USER GUIDE

MODEL: XPEDITION 3 i-Size ECE R129.03 v.1.0

ATTENTION! Product graphics serve an illustrative function only!



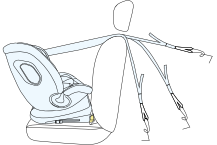



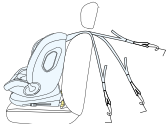



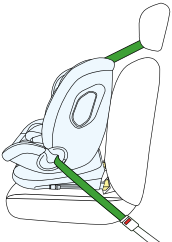



1.0 Usage

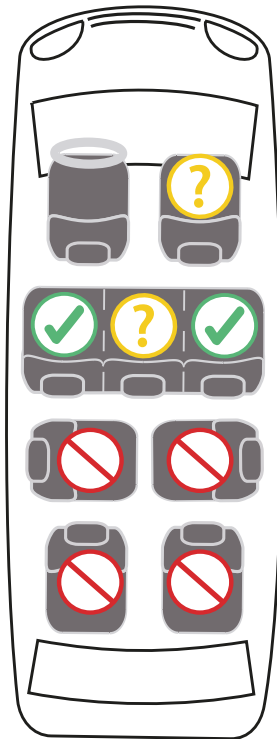
The car seat has been designed, tested and approved for use in accordance with the requirements of UN/ECE Regulation No. 129 concerning the approval of child-restraint systems (UN/ECE R129/03).

Do not set the car seat in a forward facing position until your child is 15 months old and 76 cm tall.

The car seat can be installed in the car in places indicated by the manufacturer in the vehicle manual. Manufacturer's instructions shall be read before using the car seat.

To ensure proper installation, please refer to the table on the next page.

Hight of the child	Car seat positioning	Car seat mounting
40-105 cm		<p data-bbox="1289 135 1889 163">ISOFIX + Top-Tether + internal safety harness</p> <div data-bbox="1402 187 1771 277">    </div> <p data-bbox="1406 283 1490 306">ISOFIX</p>
76-105 cm		<p data-bbox="1289 339 1889 367">ISOFIX + Top-Tether + internal safety harness</p> <div data-bbox="1402 391 1771 481">    </div> <p data-bbox="1406 487 1490 510">ISOFIX</p>
100 – 150 cm		<p data-bbox="1369 541 1809 569">ISOFIX + three-point car seat belt</p> <div data-bbox="1484 593 1694 683">   </div> <p data-bbox="1488 689 1572 712">ISOFIX</p>
		<p data-bbox="1424 730 1754 758">three-point car seat belt</p> <div data-bbox="1532 782 1632 872">  </div>



2.0 Safety instructions

Please take a few minutes to read this instruction manual in order to ensure the proper safety of your child.



- The car seat **MUST NOT** be installed on the vehicle seats mounted backwards or sideways.



- The car seat can only be installed on the vehicle seat with a three-point car seat belt.
- The front air-bag must be deactivated.



- It is recommended to install the car seat on the vehicle back seats only.

!WARNING!

Please refer to your vehicle operating manual for information on the suitability of the vehicle seat for use with a car seat.

! Remember - the internal safety harness holding the child should be adjusted to the child's body shape and not twisted. For this reason, the child should not wear thick clothes under the safety harness.

! The car seat waist belts must run as low as possible across your child's pelvis to ensure optimum effect in the event of an accident.

! The car seat should be replaced when it has been subjected to violent stresses during a traffic accident.

! The car seat cannot be modified in any way without the acceptance of the relevant authority granting approvals. Failure to install the car seat in accordance with the manufacturer's instructions may pose a threat to people's life and health.

! Protect the car seat from direct sunlight, otherwise your child may be burnt by its heated parts. Protect your child and the car seat from sunlight.

! NEVER leave your child unattended in the car seat.

! Make sure that the luggage and other objects are adequately secured, in particular on the rear parcel shelf, as they can cause injuries in the event of a collision.

! The car seat CANNOT be used without a cover.

! DO NOT use any replacement covers, other than those recommended by the manufacturer, as the cover is an integral part of the safety system of a car seat.

! DO NOT use any attachment points, other than those described in the instruction manual and marked on a car seat.

! All hard elements and plastic parts of the car seat must be placed and installed in a way preventing them from being trapped by the sliding seat or vehicle doors under normal vehicle operating conditions.

! Regularly check the technical condition of the car seat, pay special attention to the fixing points, seams and adjusting parts. It is important to ensure that all mechanical elements are fully operational. Never grease or oil parts of the car seat.

! DO NOT use the car seat if its parts are damaged or loose.

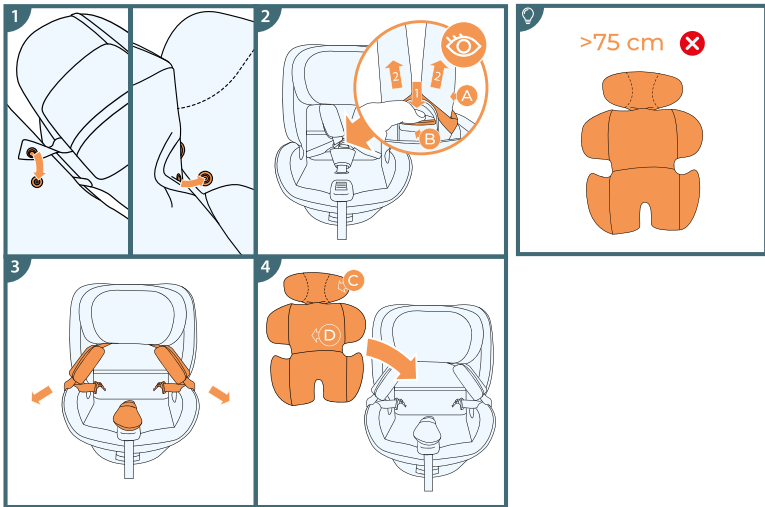
! In the event of an emergency, it is important to quickly unfasten the car seat belts. This means that the release button of the safety harness is not fully secured; make sure your child does not play with the safety harness.

! Set a good example for your child and always fasten your car seat belt. An adult who is not fastened with a car seat belt can also pose a threat to a child.

! Make sure that the car seat is correctly secured before each journey in the car.

! The car seat must be secured at all times, even when not in use. The car seat that is not secured can injure the passengers even during emergency braking.

! On some vehicle seats made of delicate materials, the use of car seats may leave marks and/or discolouration. In order to prevent it, you can place a blanket, towel or similar product under the car seat.



- A: Internal safety harness**
- B: Safety harness buckle**
- C: Headrest part of the insert**
- D: Insert**

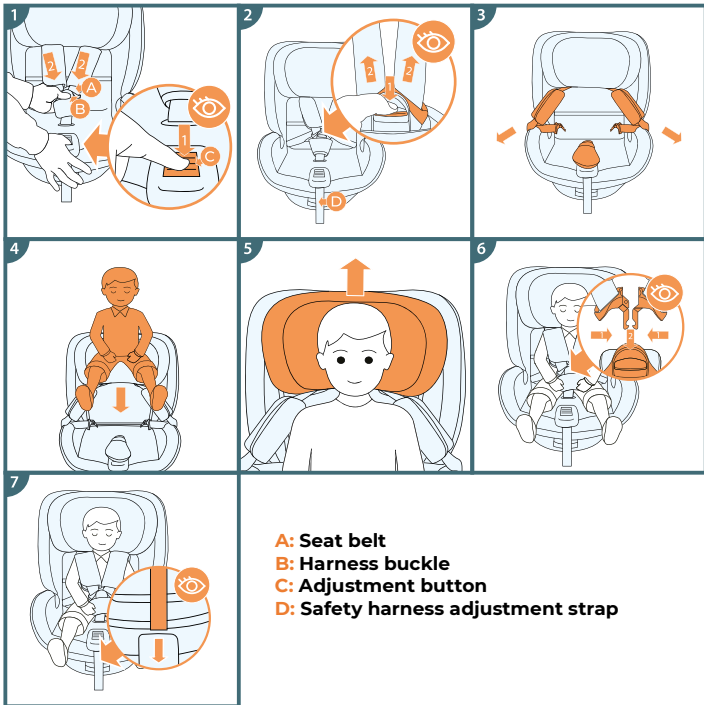
3.0 Securing the child

3.1 Installation of insert

1. Connect the headrest part of the insert with the rest of it using snap fasteners.
2. Unfasten the safety harness. **Note! Make sure all fasteners are properly secured.**
3. Pull the safety harness to the sides of the car seat.
4. Put the insert in place

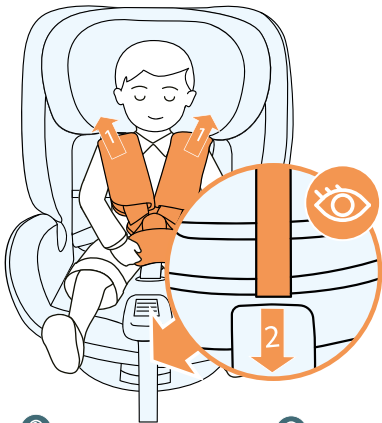


Baby insert improves protection level and comfort. It is suitable for children of less than 75cm in height.



3.2 Securing the child with the internal safety harness

1. Press the safety harness adjustment button while pulling the harness straps. **Remember! Do not pull on the shoulder pads.**
2. Unfasten the safety harness
3. Move the safety harness to the sides of the car seat
4. Place the child in the car seat
5. Adjust the headrest to the child's height
6. Fasten the safety harness
7. Adjust the safety harness to your child by pulling the safety harness clamp strap



3.3 Tightening the safety harness

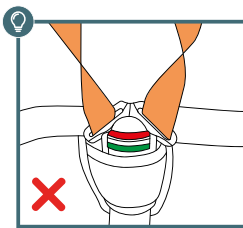
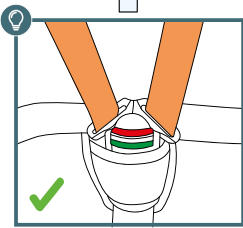
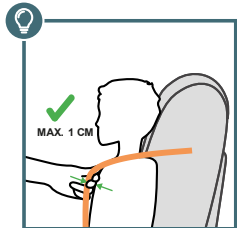
1. Remove any slack from the waist part of the safety harness by pulling it up using the shoulder part.
2. Pull the adjustment strap until the harness lies flat on your child's body.

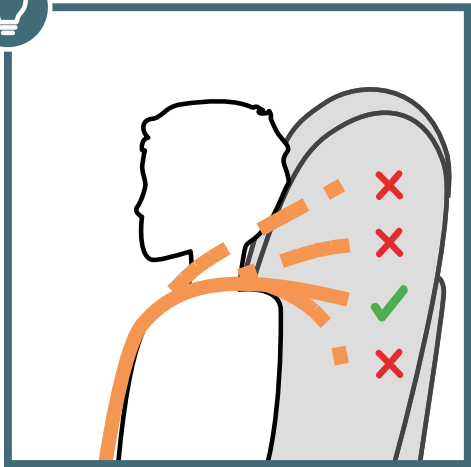


IMPORTANT! Make sure that the safety harness is not twisted.

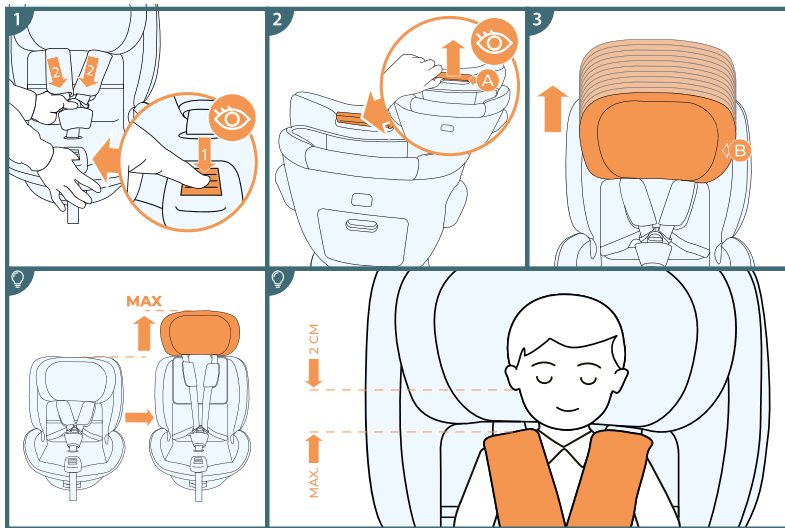


Make sure that the safety harness is tightened so that there is no more than 1 cm of slack between the harness and the child.





Adjust the appropriate height of the shoulder part of the safety harness so that the harness enters the car seat backrest flat, horizontally, right above the child's shoulders.



A: Headrest height adjustment lever

B: Headrest

3.4 Height of the headrest

The headrest should fit snugly around your child's head, with the lower part of the headrest at the same height as your child's shoulders.

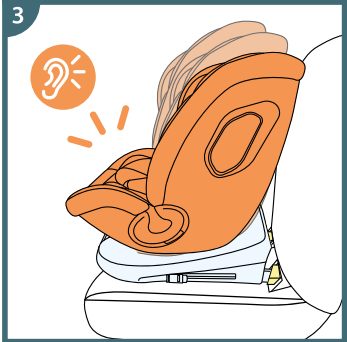
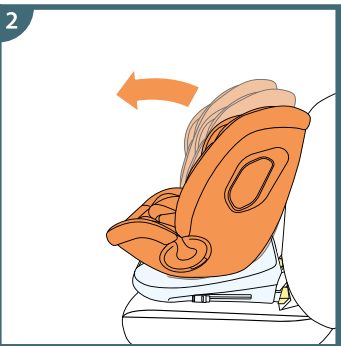
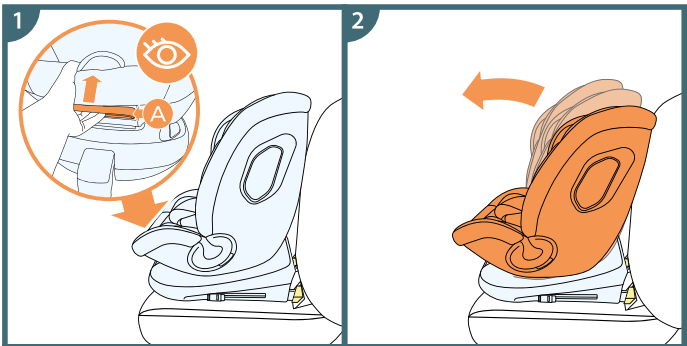
1. Loosen the safety harness straps fully by pressing the button and pulling the safety harness straps **Remember! Do not pull on the shoulder pads.**
2. Grasp the headrest adjustment lever located on the back of the headrest and pull it gently upwards
3. Adjust the headrest by selecting one of eleven options and when the height is adjusted, release the adjustment strap



IMPORTANT! Make sure the vehicle seat headrest is locked in place.



The headrest should fit snugly around your child's head, with the lower part of the headrest at the same height as your child's shoulders.



A: Seat inclination adjustment lever

3.5 Seat inclination adjustment mechanism

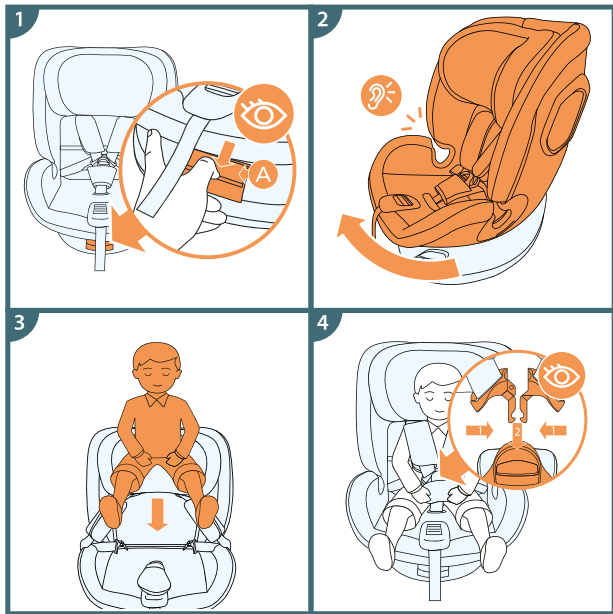
1. Pull the seat inclination adjustment lever
2. Adjust the seat inclination angle and release the lever in the required position (one of four possible options)
3. Move the seat slightly until you hear a distinct "click" sound.



Important! There are four seat inclination options, both in forward facing and rearward facing positions.



Important! When using the car seat for the 100-150 cm range, the car seat must be placed in a vertical position.



A: Seat easy spin lever

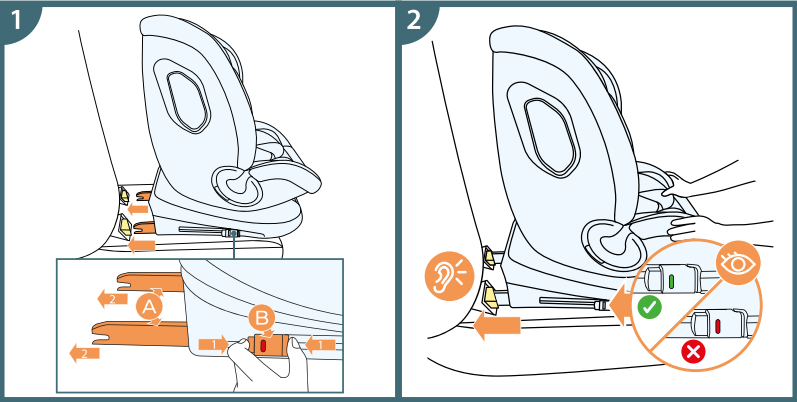
3.6 Easy spin mechanism

The easy spin mechanism function helps to conveniently position the child or take the child out of the car seat.

1. Pull the rotation lever located on the base of the car seat.
2. Rotate the car seat to the desired direction, then release the lever. You will hear a "click" indicating that the car seat is locked in the selected position.
3. Place the child in the car seat
4. Secure the child with the car seat belts



Note the audible sound of the easy spin mechanism lock



A: ISOFIX arms
B: ISOFIX release lever

4.0 Installation in the vehicle

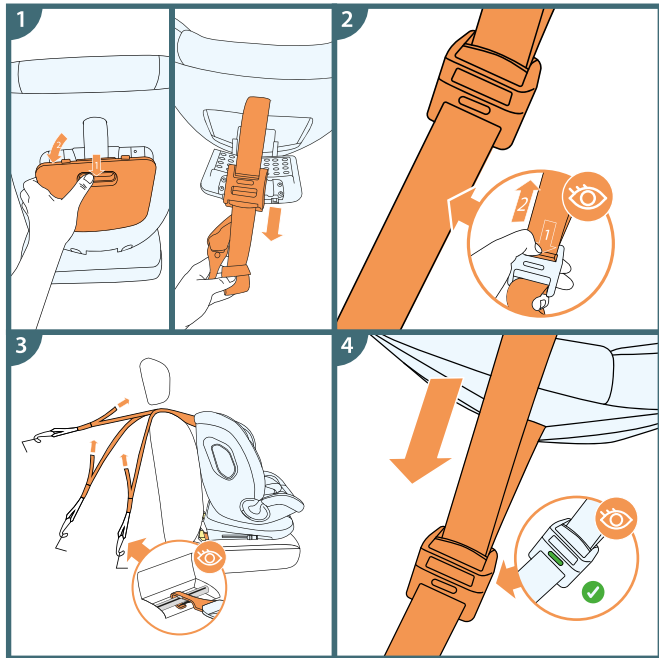
4.1 ISOFIX installation

1. Pull the ISOFIX release lever and extend the ISOFIX connector arms to their maximum length.
2. Grasp the car seat with both hands and insert both latches into the places of installation on the vehicle seat. When you hear a "click" of each of the ISOFIX latches, push the seat of the car seat against the backrest, exerting firm, even pressure on both sides.



Pay attention to the audible clicking sound of the ISOFIX connectors and grasp the car seat to check whether it is securely installed without any play. If it moves and the ISOFIX latches come out, repeat the previous steps.

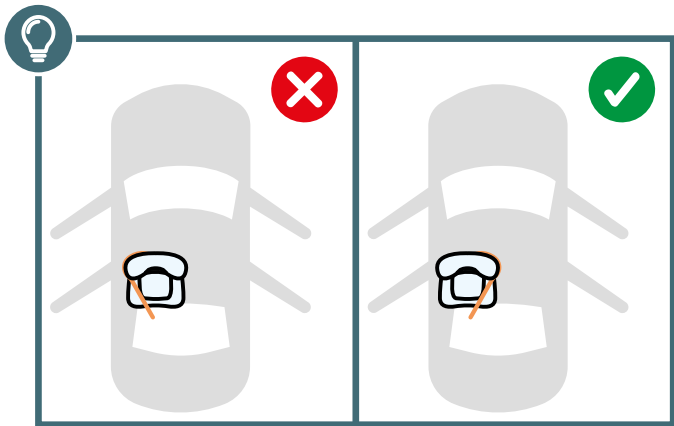
ATTENTION! The locking latches are properly attached only when both button indicators are completely green.



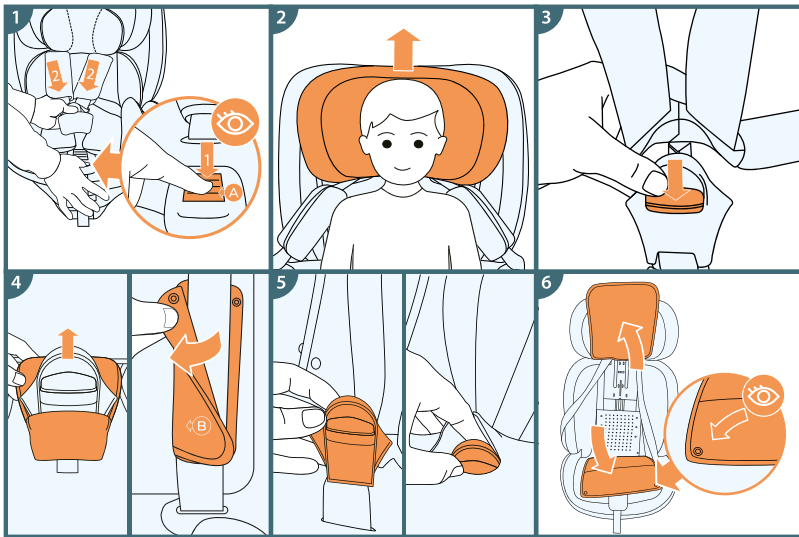
4.2 Installation of the Top-Tether

1. Pull the Top Tether out of the storage compartment at the back of the car seat.
2. Press the belt loosening button to loosen the belt (the belt must long enough to allow the hook to be placed on the anchorage point at the rear of the vehicle seat or in the trunk).
3. Attach the belt hook to the vehicle's anchor point (it is necessary to read the vehicle's instructions).
4. Pull the fastening strap on the other end to eliminate the slack. Proper tension of the belt is confirmed by the green indicator.

IMPORTANT: The Top-Tether strap must not pass over the headrest of the vehicle. It should pass under the headrest of the vehicle. If it is not possible, remove the headrest of the vehicle (check if it is allowed according to the vehicle manual).



ATTENTION! To use the easy spin system, the Top Tether strap must be mounted on the inside of the vehicle (opposite the door)

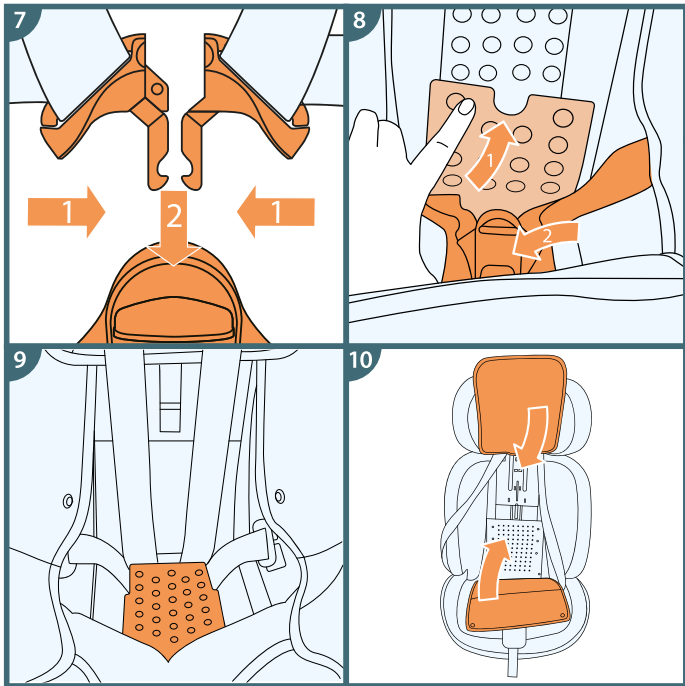


5.0 Stowing away the 5-point harness

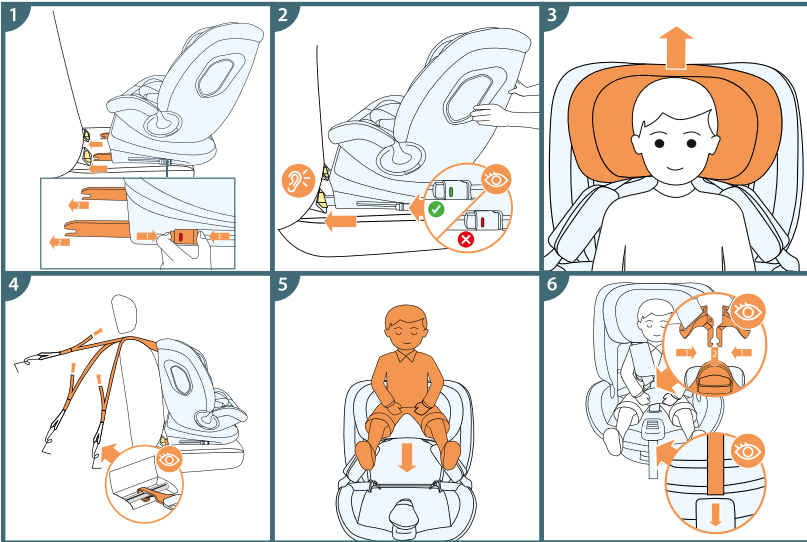
1. Loosen the car seat belt as much as possible by pressing the button and pulling on the car seat belt. **Remember! Do not pull on the shoulder pads.**
2. Set the headrest at the highest position
3. Unfasten the buckle
4. Remove the shoulder pads and the buckle pad by unfastening the fasteners
5. Guide the buckle through the opening in the cover
6. Unfasten the fasteners and uncover the car seat backrest

A: Internal safety harness adjustment button

B: Shoulder pad



7. Fasten the five-point internal safety harness
8. Open the compartment cover and then put the fastened safety harness into the compartment.
9. Arrange the safety harness flat along the backrest and close the compartment cover.
10. Put the cover back on the car seat using the fasteners on the edges of the fabric.



6.0 Installation of the car seat

Note! The car seat should be placed directly on the vehicle seat.

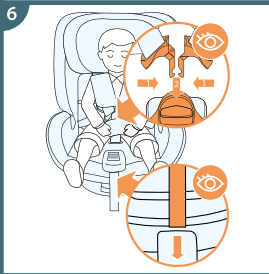
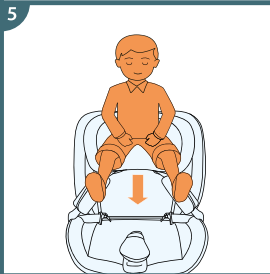
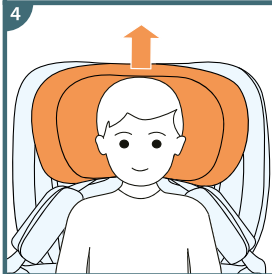
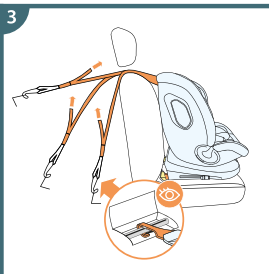
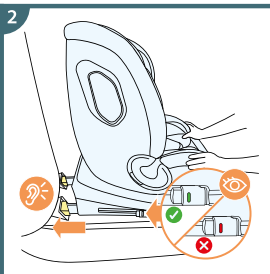
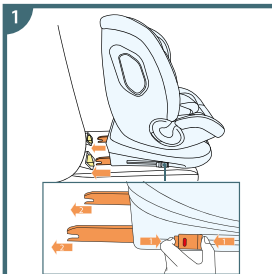
6.1 Children between 40 and 105 tall using the ISOFIX system and the Top-Tether strap).

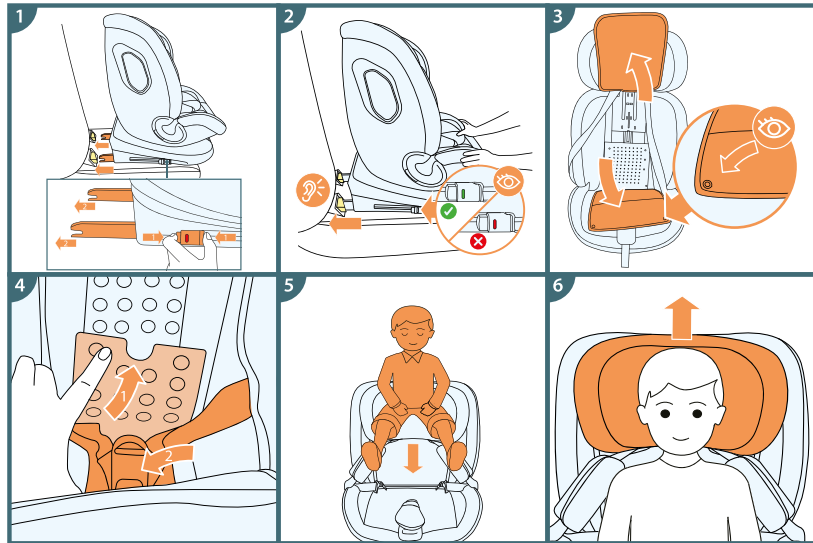
1. Install the car seat on the seat rearward facing using the ISOFIX connectors (if the car seat is already installed forward facing, rotate it using an easy spin mechanism)
2. Push the car seat all the way into the seat and check its correct installation – the colour of the indicators should change to green.
3. Adjust the headrest to the child's height.
4. Secure the car seat with the Top Tether strap.
5. Place your child in the car seat
6. Secure the child with the internal safety harness

IMPORTANT! If the child has already reached 76 cm, remove the insert before placing the child in the car seat.

6.2 Children between 76 and 105 tall using the ISOFIX system and the Top-Tether strap).

1. Install the car seat on the vehicle seat forward facing using ISOFIX connectors. (if the car seat is already installed rearward facing, rotate it using an easy spin mechanism).
2. Push the car seat all the way into the seat and check its correct installation – the colour of the indicators should change to green.
3. Secure the car seat with the Top Tether strap.
4. Adjust the headrest to the child's height.
5. Place your child in the car seat
6. Secure the child with the internal safety harness



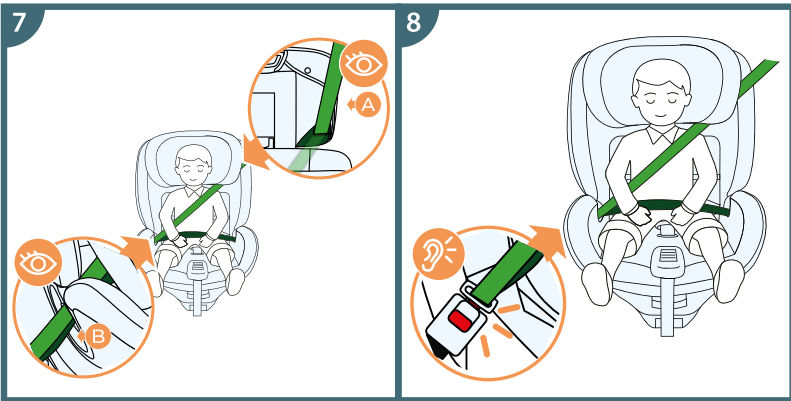


6.3 Children between 100 and 150 cm - using the ISOFIX connectors and a three-point car seat belt.



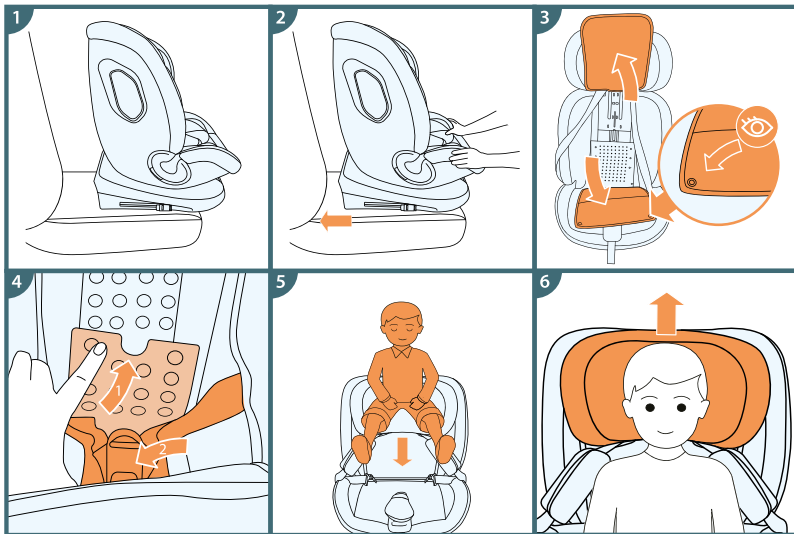
Important! When using the car seat for the 100-150 cm range, the car seat must be placed in a vertical position.

1. Install the car seat on the vehicle seat forward facing using ISOFIX connectors
2. Push the car seat all the way into the seat and check its correct installation – the colour of the indicators should change to green.
3. Uncover the car seat shell by pulling apart the fasteners located on its edges and open the safety harness compartment located in the shell.
4. Store the five-point safety harness in the compartment. The entire procedure is described in detail in the section on stowing away the safety harness.
5. Place the child in the car seat
6. Adjust the headrest to the child's height.



- A: Shoulder belt guide**
- B: Waist belt guide**

7. Guide the shoulder belt through the green guide of the shoulder belt.
8. Guide the car seat belt through both waist belt guides. Fasten the car seat belt. You will hear a characteristic "click".

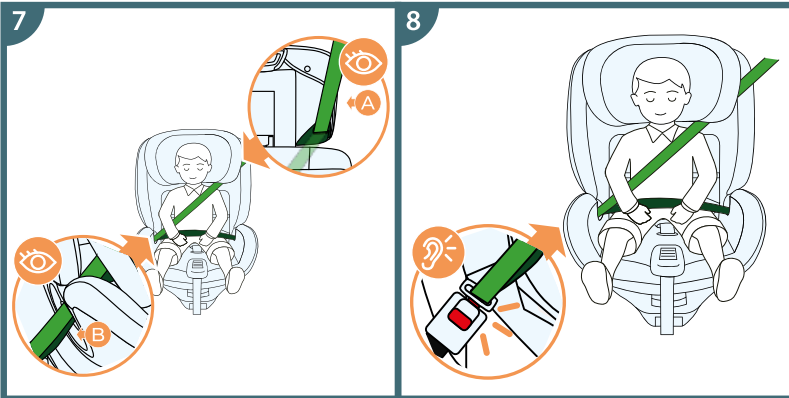


6.4 Children between 100 and 150 cm tall - using a three-point car seat belt.



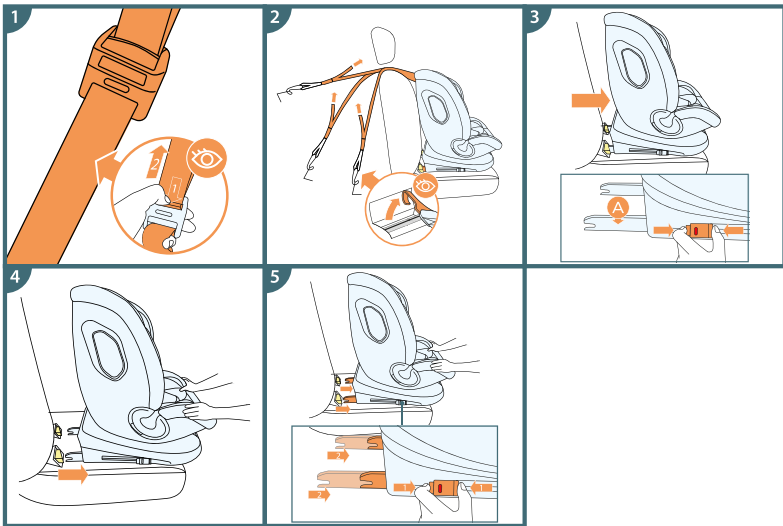
Important! When using the car seat for the 100-150 cm range, the car seat must be placed in a vertical position.

1. Install the car seat forward facing on the vehicle seat.
2. Push the car seat all the way to the vehicle seat.
3. Uncover the car seat shell by pulling apart the fasteners located on its edges and open the safety harness compartment located in the shell.
4. Store the five-point safety harness in the compartment. The entire procedure is described in detail in the section on stowing away the safety harness.
5. Place the child in the car seat
6. Adjust the headrest to the child's height.



- A: Shoulder belt guide**
- B: Waist belt guide**

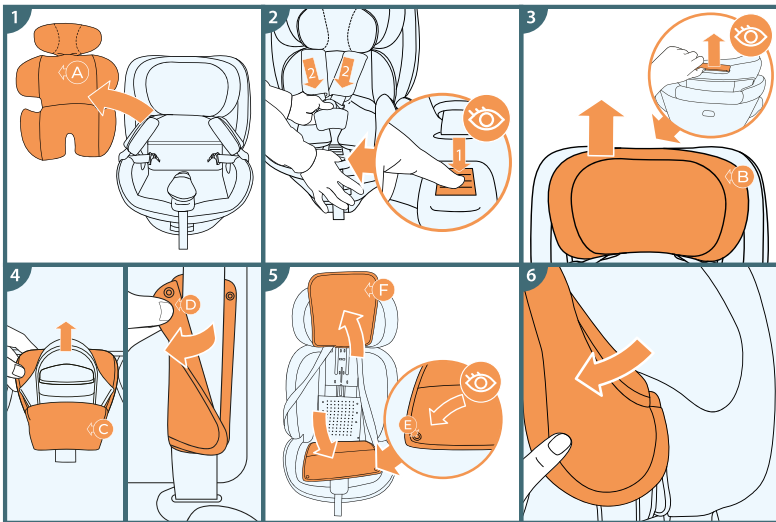
7. Fasten the fasteners and cover the car seat backrest.
8. Guide the shoulder belt through the green shoulder belt guide and then guide the car seat belt through both waist belt guides. Fasten the car seat belt. You will hear a characteristic "click".



7.0 Removing the car seat (ISOFIX installation system)

1. Loosen the Top-Tether strap by pressing the release button while pulling the strap towards you.
2. Remove the anchor hook from the vehicle's anchor point
3. Simultaneously press the ISOFIX release buttons on both ISOFIX connector arms (the colour of the markers should change to red)
4. Slide the car seat out of the ISOFIX guides.
5. Slide the ISOFIX arms back into the car seat base

A: ISOFIX arms

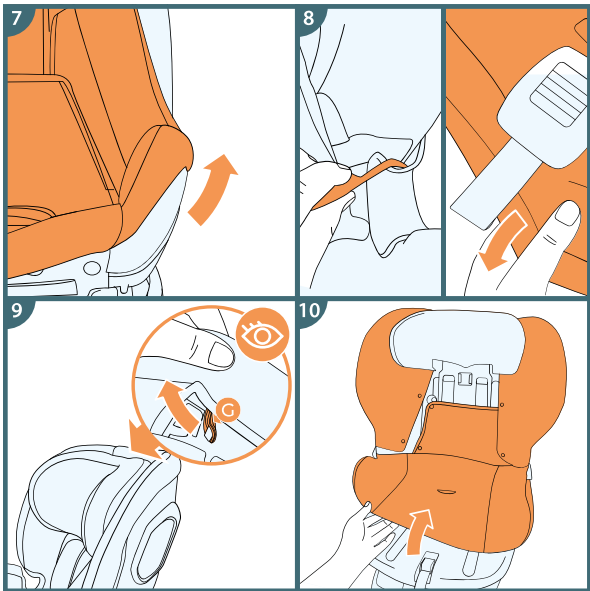


- A:** Insert
- B:** Headrest
- C:** Buckle pad
- D:** Shoulder pad

- E:** Front part of the seat backrest cover
- F:** Fastener

7.1 Removing the cover

1. Remove the insert
2. Loosen the car seat belt completely by pressing the button and pulling on the car seat belt. **Remember! Do not pull on the shoulder pads.**
3. Move the headrest to the highest position
4. Remove the shoulder pads and the buckle pad
5. Unfasten the fasteners securing the cover to the front part of the car seat backrest
6. Remove the fabric from the headrest starting from the sides.



G: Rubber securing the fabric

7. Starting at the seat of the car seat, slide the cover off the sides.
8. While stretching the material, slide it off the waist part guides and the safety harness adjustment button.
9. Pull the rubber bands on the back of the car seat backrest to remove them from the hooks. **Note! Make sure that both rubber bands are removed from the hooks.**
9. Slide the fabric off, passing it through the upper part of the car seat

7.2 Installing the cover

To put the cover back on - just reverse the above sequence of actions. Align the cover with the attachment points on the car seat. Start by installing the cover on the shell of the car seat and finally on the headrest part.



Important! Remember to hook both fastening rubber bands onto the hooks located on the back of the cover.

8.0 Cleaning

CAUTION The car seat must not be used without the cover.

- The cover is removable and hand washable at 30°C.
- Follow the washing instructions on the cover information label. The colours may fade if it is washed at the temperature above 30°C. The cover should not be centrifuged or dried in a tumble dryer (which may lead to separation of the material layers).
- Prolonged sun exposure of the cover is prohibited.
- Plastic parts can be cleaned with soap and water.
- Do not use aggressive cleaning agents (such as solvents).
- The safety harness can be cleaned in lukewarm soapy water.

Warning! You must never remove the metal clips from the safety harness.

The full text of the Warranty Terms and Conditions is available on the website WWW.KINDERKRAFT.COM



(AR) بضمان مصلحة عملائنا. نحن في خدمتكم! إذا كانت لديكم أي مشكلة مع المنتج الذي حصلتم عليه، فيجوز الاتصال بنا بالطريقة التي تفضلونها!

(CS) V zájmu péče o naše klienty - jsme rádi k dispozici! Pokud jste se setkali s nějakým problémem v souvislosti s obdrženým výrobkem, kontaktujte nás způsobem, který vám nejvíce vyhovuje!

(DE) In Sorge für unsere Kunden - stehen wir gerne zu Ihrer Verfügung! Wenn Sie auf ein Problem mit dem erhaltenen Produkt treffen, treten Sie bitte mit uns in Kontakt in der bequemsten Weise für Sie!

(EN) In the interests of our Clients - we are at your disposal! If you have a problem with the product you received, contact us in the most convenient way for you!

(ES) ¡Por el bien de nuestros clientes, estamos a su disposición! ¡Si tiene cualquier problema con el producto recibido, póngase en contacto con nosotros de forma más cómoda para usted!

(FR) Dans l'intérêt de nos clients - nous sommes à votre disposition! Si vous avez un problème avec le produit que vous avez reçu, Contactez-nous de la manière la plus pratique pour vous!

(HU) Bármikor állunk az ügyfeleink rendelkezésére! Ha az átvett termékkel kapcsolatban valamilyen problémába ütközött, az Önnek legmegfelelőbb módon vegye fel velünk a kapcsolatot!

(IT) Prendersi cura dei nostri Clienti - siamo alla Vostra disposizione! Se hai incontrato un problema con il prodotto che hai ricevuto. Contattaci nel modo piu conveniente per te!

(NL) In het belang van onze klanten - staan wij ter beschikking! Als u een probleem met het ontvangen product tegenkomt, neemt contact met ons op via de manier die u het makkelijkste vindt!

(PL) W trosce o naszych Klientów - jesteśmy do dyspozycji! Jeśli napotkałeś problem dotyczący otrzymanego produktu, skontaktuj się z nami w najbardziej dogodny dla Ciebie sposób!

(PT) Para o conforto dos nossos Clientes - estamos sempre à sua disposição! Se tiver qualquer problema com o nosso produto, entre em contacto conosco de modo mais confortável para si!

(RO) In interesul clienților noștri - suntem la dispozitia dumneavoastră! Dacă aveți o problema cu produsul pe care l-ați primit, contactați-ne în modul cel mai convenabil pentru dvs.!

(RU) заботясь о наших клиентах, мы находимся в вашем распоряжении. Если вы столкнулись с проблемой, связанной с полученными продукто, свяжитесь с нами наиболее удобным для вас способом!

(SK) Náš zákazník je pre nás dôležitý - sme vám k dispozícii! Ak máte akýkoľvek problém súvisiaci s doručeným produktom, kontaktujte nás spôsobom, ktorý vám najviac vyhovuje!

(SV) I våra kundens intresse - vi står till ditt förfogande! Om du har problem med den produkt du fick, kontakta oss på det mest praktiska sättet för dig!

International contact:

support@kinderkraft.com

+44 20 4525 0748



kinderkraftofficial



kinderkraft



kinderkraftofficial

منتج/ВЫРОБСЕ/HERSTELLER/MANUFACTURER/FABRICANTE/FABRICANT/
GYARTÓ/FABBRICANTE/FABRIKANT/PRODUCENT/FABRICANTE/PRODUCĂTOR/
ПРОИЗВОДИТЕЛЬ/ВЫРОБСА/TILLVERKARE:

**4Kraft Sp. z o.o. ul. Tatrzańska 1/5
60-413 Poznań, Poland**